

Contents

Answers to Your Wireless Questions

Q: Will I have to learn different programming if i-Mode comes to the United States?

A: i-Mode uses a subset of HTML called Compact HTML (cHTML). Anyone familiar with HTML should have no problem learning this. However, there are signs that the industry may move towards XHTML as the preferred markup language for these devices.

Foreword	xxv
Chapter 1 Moving from the Web to Wireless	1
Introduction	2
Explaining Wireless	2
Types of Wireless Connectivity	4
Mobile Phones as Wireless Modems	8
Packet Switched Networks	9
Future Networks	10
Local and Personal Networks	11
Fixed Wireless Connectivity	13
Evolving Mobile Devices	14
Wireless Phones	15
Basic Mobile Phone Properties	15
PDAs	19
Palm OS Devices	21
Pocket PC Devices	23
Basic PDA Properties	24
Laptop Computers	28
Basic Laptop Properties	29
Convergent and Future Mobile Wireless Devices	31
Something Old, Something New	33
Old Stuff: The Existing Internet	34
New Stuff: Mobile Connectivity	35
Moving from a Wired to a Wireless Internet	38
Rethinking User Interface and Interaction	39

Recognizing Device Limitations	40
Adding Personalization	41
Summary	43
Solutions Fast Track	45
Frequently Asked Questions	48

Chapter 2 Wireless Architecture 51

Introduction	52
Components of a Wireless Network	52
The WAP Browser	53
The WAP Gateway	54
Corresponding WAP Protocols	54
Understanding Information Flow through the Gateway	54
The Web Server	55
Adjusting the Metaphor for the Wireless Internet	56
Considering the Mobile User	57
Complementing Your Web Offering	57
Accepting the Challenge of WAP-Enabled Devices	57
Determining Device Capabilities	58
Testing Your Application on Various Devices	59
Adopting Wireless Standards	60
Options in Markup Languages	61
Wireless Markup Language	62
Compact HTML	62
Web Clipping	62
Handheld Device Markup Language	62
Using Wireless Networks and Their Evolving Generations	62
Noting the Market for Wireless Browsers and Other Applications	64
WAP Browsers	64
Java2 Micro Edition	65
i-Mode and cHTML	66
Palm Query Application	66
Web Browser	66

Using the Short Message Service

The Short Message Service (SMS) allows you to send and receive messages of about 160 characters via your mobile phone using a GSM network. This is a relatively old technology but is still quite popular.

Short Message Service	67
Summary	68
Solutions Fast Track	68
Frequently Asked Questions	70
Chapter 3 A New Markup: WML	73
Introduction	74
A Brief History of Wireless Content	74
Developing the Intelligent Terminal Transfer Protocol	74
Developing the Handheld Device Markup Language	75
Developing the Tagged Text Markup Language	75
Forming the WAP Forum	75
Combining Languages into the Wireless Markup Language	76
Projecting Future Growth	77
WML Overview	77
Creating Well-Formed Documents	78
Nesting	78
Creating Valid Documents	79
Using WML Syntax	83
Following Syntax Rules	84
Replacing Entities	84
Closing Elements	85
Characterizing the Element with Attributes	86
Case Sensitivity	86
Handling White Space	86
Commenting	87
Using Variables	87
Formatting Text	87
Displaying Fonts	88
Reserved Characters	89
Displaying Tables	90
Meta Information	91
Controlling Caching	91

Exploring the <postfield> Element

The <postfield> element specifies a name and value pair that will be sent to the server as part of a URL request. The following are attributes for the <postfield> element:

- **name** The name of the field.
- **value** The value of the field.

Bookmarking	92
Understanding the Deck of Cards Paradigm	92
WML Elements	93
Adding Attributes	93
The id and class Attributes	94
The <a> Element	94
The <access> Element	95
The <anchor> Element	95
The Element	96
The <big> Element	97
The Element	97
The <card> Element	97
The <do> Element	98
The Element	100
The <fieldset> Element	100
The <go> Element	101
The <head> Element	101
The <i> Element	102
The Element	102
The <input> Element	103
The <meta> Element	104
The <noop> Element	105
The <onevent> Element	105
The <optgroup> Element	106
The <option> Element	106
The <p> Element	107
The <postfield> Element	108
The <prev> Element	108
The <refresh> Element	108
The <select> Element	108
The <setvar> Element	109
The <small> Element	110
The Element	110
The <table> Element	110
The <tr> Element	111
The <td> Element	111

The <template> Element	112
The <timer> Element	112
The <u> Element	113
The <wml> Element	113
Creating WML Content	114
Navigating within the Deck	114
Getting Information from the User	115
Using Server-Side Programs to Create Dynamic WML	117
Using Openwave Extensions Introduce Context	120
Navigating Parent/Child Relationships Using Extensions	121
Using the <spawn> and <catch> Extensions	123
Using the <exit> and <throw> Extensions	124
Using the <catch> Extension	124
Using the <send> and <receive> Extensions	124
WML Editors, WAP SDKs, and Emulators	126
WML Editors	126
Other Editors	129
WAP SDKs	130
Ericsson WapIDE SDK	130
Motorola Mobile ADK	130
Nokia WAP Toolkit	130
Openwave UP.SDK	130
WAPObjects	131
WML Emulators	131
Summary	132
Solutions Fast Track	132
Frequently Asked Questions	135

Chapter 4 Enhancing Client-Side Functionality with WMLScript	137
Introduction	138
What Is WMLScript?	138
Not All Phones Support WMLScript	138
WMLScript Compilation	140
How WMLScript Interacts with WML	140
Understanding the Basic Elements of WMLScript	141
Examining WMLScript Syntax	141
Examining WMLScript Data Types	142
Examining WMLScript Operators	143
Examining WMLScript Control Structures	146
Using WMLScript Libraries	147
Functions in the Class Libraries	148
Learning to Interpret WMLScript	148
Dissecting the Code	150
Performing Mathematical Operations Using WMLScript	151
Dissecting the Code	152
Using WMLScript for Input Validation	153
Dissecting the Code	155
Credit Card Validation	157
The Credit Card Validating Algorithm	157
Dissecting the Code	160
Using WMLScript and Microsoft Active Server Pages (ASP): Case Study	162
Designing the Application	162
Creating the Database	163
The WML Deck	163
Generating the WMLScript Program from ASP	165
Debugging the WMLScript	170
Lessons Learned	173
Caching Problems	174

Examining WMLScript Data Types

WMLScript supports five built-in data types:

- Integer
- Floating Point
- String
- Boolean
- Invalid

Debugging the Emulators	174
Emulators Are Relatively Unstable!	174
Summary	175
Solutions Fast Track	175
Frequently Asked Questions	177

Chapter 5 Wireless Development Kits 179

Introduction	180
The Openwave UP.SDK 4.1	180
Installing Openwave UP.SDK	181
System Requirements for the Openwave UP.SDK	181
Obtaining the Openwave UP.SDK	182
Installing the Openwave UP.SDK	182
Working with the Openwave UP.SDK	183
Accessing and Editing Local Files	184
Accessing Files through a Gateway	186
Debugging Techniques	187
The Nokia WAP Toolkit 2.1	188
Installing Nokia's WAP Toolkit	189
System Requirements for the Nokia WAP Toolkit	189
Obtaining the Nokia WAP Toolkit	190
Installing the Nokia WAP Toolkit	190
Working with the Nokia WAP Toolkit	191
Accessing and Editing Local Files	192
Accessing Files through a Gateway	195
Debugging Techniques	196
The Motorola Mobile Application Development Kit 2.0	199
Installing the Motorola Mobile ADK	199
System Requirements for the Motorola Mobile ADK	199
Obtaining the Motorola Mobile ADK	201
Installing the Motorola Mobile ADK	201
Using the Mobile ADK	204
Accessing and Editing Local Files	206

Using the Nokia WAP Toolkit 2.1

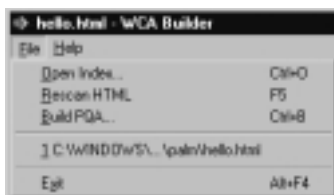
The Nokia WAP Toolkit is an environment for developing, viewing, and testing WAP applications. It includes:

- Editing, validating, and viewing WML decks
- Editing and debugging WMLScript files
- Viewing and changing WML variables inside the WAP browser
- Examining debug messages from the WAP browser
- Creating and editing WBMP images

Accessing Files through a Gateway	207
Debugging Techniques	208
The Ericsson Mobile Internet WAP-IDE 3.1	209
Installing the Ericsson Mobile WAP-IDE	209
System Requirements for the Ericsson Mobile WAP-IDE	209
Obtaining the Ericsson Mobile WAP-IDE	210
Installing the Ericsson Mobile WAP-IDE	210
Working with the Ericsson Mobile WAP-IDE	211
Accessing and Editing Local Files	212
Accessing Files through a Gateway	214
Debugging Techniques	215
The Yospace SmartPhone Emulator 2.0	216
Installing the Yospace SmartPhone Emulator	216
System Requirements for the Yospace SmartPhone Emulator	217
Obtaining the Yospace SmartPhone Emulator	217
Installing the Yospace SmartPhone Emulator	217
Developing with the Yospace SmartPhone Emulator	218
Accessing and Editing Local Files	220
Accessing Files through a Gateway	220
Debugging Techniques	221
Summary	222
Solutions Fast Track	224
Frequently Asked Questions	227
Chapter 6 Web Clipping	229
Introduction	230
What Is Web Clipping?	231
The Components of Web Clipping	233
Client-Side Components	233

Creating a Web Clipping Project with the WCA Builder

The WCA Builder has three main options from the File menu: Open Index, Rescan HTML, and Build PQA.



Server-Side Components	234
A Typical Web Clipping Transaction	235
What Types of Hardware Support Web Clipping	236
Palm VII/VIIx Connected via Mobitex	237
Other Handheld Devices Connected via CDPD	237
Palm-Compatible Handhelds Connected via the Mobile Internet Kit	238
Working with the Palm OS Emulator	239
Downloading and Installing the Emulator	239
Transferring a ROM Image	240
Obtaining ROM Images from Palm	242
Starting the Emulator	242
Connecting the POSE to the Internet	242
Creating a Web Clipping Project with the WCA Builder	243
Hello, World!	246
Scanning the HTML	247
Creating the .pqa File	247
Installing and Uninstalling the Web Clipping Application on the POSE	248
Viewing the Web Clipping Application	249
Adding Images and Additional Pages to Your WCA	250
Web Clipping Basics	252
Unsupported Tags and Elements	252
Supported Tags and Elements	254
Using the <title> Tag	255
Using the <meta> Tag	256
Using the <body> Tag	257
Using the <table>, <tr>, and <td> Tags	257
Using the <p> Tag	259
Using the , <i>, and <u> Tags	260
Using the and Tags	260
Using the , , and Tags	260
Using the <h1> – <h6> Tags	261

Using the Tag	261
Using the <a> Tag	262
Using the <form> Tag	263
Using the <select> Tag	263
Using the <input> Tag	264
Web Clipping Extensions	266
Palm-Specific <meta> Tags	268
Identifying Users with a Device ID	268
Estimating User Location by ZIP Code	270
Selecting a Date with the Datepicker Object	270
Choosing a Date with the Timepicker Object	272
Web Clipping in Action: Examples	274
Using a mailto: Link with Parameters	274
Sending E-mail via a Web Server	276
Guidelines for Authoring your Web Clipping Application	281
Summary	283
Solutions Fast Track	283
Frequently Asked Questions	286

Avoiding the Common Mistakes Made by Webmasters

Some of the more common mistakes made by Webmasters include:

- Wasting bandwidth
- Forgetting task-based design
- Providing too many options or too much information
- Using branded, Web-like terminology instead of plain language

Chapter 7 Deck of Cards: Designing Small Viewpoint Content 289

Introduction	290
Thinking In the Hand, not On the Web	291
Common Mistakes Made by Webmasters	293
Wasting Bandwidth	293
Forgetting Task-Based Design	294
Providing Too Many Options or Too Much Information	295
Using Branded Terminology Instead of Plain Language	296
Thinking Like a Mobile User	297
Segregating Tasks	298
Optimizing Bandwidth	299
Designing Coherent Navigation	303

Stacking a Deck of Cards	304
Parceling Navigation and Content	305
Utilizing WML Variables	314
Examining Display Differences Between	
Browsers	320
UP.Browser Interpretation	323
Nokia Interpretation	325
4thPass Kbrowser Interpretation	327
Directory.wml Example	328
Directory2.wml Example	329
Summary	332
Solutions Fast Track	333
Frequently Asked Questions	334

Choosing Mobile Content

One of the first steps to building any site is choosing what content to display on the site. The primary questions that arise in adapting a large existing site to the wireless Internet are:

1. What content/services might our users want to access while they are mobile?
2. What limitations are there to the existing mobile interfaces that we must consider?

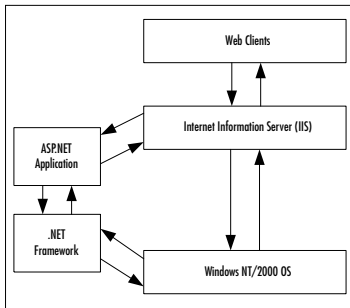
Chapter 8 Wireless Enabling Your Big Bandwidth Site	337
Introduction	338
Defining WAP MIME Types	338
Selecting which MIME Types to Add	339
Adding MIME Types to Your Server Configuration	340
Configuring the Apache Web Server	341
Adding MIME Types to Microsoft IIS	343
Detecting WAP Devices	344
Parsing Header Information	344
HTTP_USER_AGENT	345
HTTP_ACCEPT	349
Reading Other Environmental Variables	350
Redirecting Your Users to Static Content	352
Redirecting Users in PHP	353
Redirecting Users in Perl	353
Optimizing Content Distribution	356
Choosing Mobile Content	357
Convert or Redevelop?	357
Delivering Wireless Data	359
Making Your Applications Accessible	360
Implementing Wireless Graphics	362

File Formats	362
Maintaining Accessibility	363
Converting Your Images	363
Summary	364
Solutions Fast Track	364
Frequently Asked Questions	366

Chapter 9 Microsoft Mobile Internet Toolkit 367

Introduction	368
Overview of the .NET Mobile Architecture	368
Devices Supported by the Microsoft Mobile Internet Toolkit	369
System Requirements	369
Obtaining and Installing the Microsoft Mobile Internet Toolkit	370
Introduction to ASP.NET	371
The Content Components	376
HTML Server Controls	377
ASP.NET Server Controls	377
The Code Components	378
ASP.NET Architecture	380
Developing Mobile Web Forms	381
Using Multiple Forms in a Single Page	385
Linking to Forms on Other Pages	386
Dissecting Code	388
User Inputs	389
Text and Password Input	389
List Selection	393
Selecting from a List	394
Data Binding List Items	396
Dissecting the Codes	399
Events	400
Displaying Images	401
Validation Controls	405
Paginations	407
Calendar Control	409

The Architecture of ASP.NET



Accessing Data with ADO.NET	411
A Brief Look at ADO.NET	411
Data Providers	412
ADO.NET DataReader	414
Dissecting the Codes	415
ADO.NET Dataset	417
Summary	423
Solutions Fast Track	423
Frequently Asked Questions	426

Chapter 10 Securing Your Wireless Web 429

Understanding the Seven Layers of Point-to-Point Security

Point-to-point security can be broken down into seven layers, corresponding to the steps in the communication path between mobile devices and Web servers or applications:

1. Embedded Security Technology
2. Secure Air-Connect Technologies
3. Mobile Operator Network Security
4. Secure Mobile operator Gateways
5. Authentication
6. Data Center and Network Security
7. Secure Application Interfaces

Introduction	430
Comparing Internet and Wireless Security	431
Security Challenges of the Wireless Web	433
Lack of Standards	434
Horsepower, Bandwidth, and Weak Encryption	434
User Awareness and Unsecure Devices	435
Mistrust of Wireless ASPs	436
Potential for New Viruses	436
Understanding Your Security Objectives	437
Security Models of the Wireless Web	438
Public and Private Key Cryptography	439
WTLS and Point-to-Point Security Models	442
How WTLS Works	443
WTLS Classes	444
The WAP Gap	444
The Seven Layers of Point-to-Point Security	446
Embedded Security Technology	447
Mobile Operator Network Security	448
Secure Mobile Operator Gateways	448
Authentication	448
Data Center and Network Security	449
Secure Application Interfaces	452
Problems of a Point-to-Point Security Model	452
Sniffing and Spoofing	452
Session Management and URL Rewriting	453

Man-in-the-Middle Attack	453
No Complete Solution	454
PKI Technology and End-to-End Security	
Models	454
How to Deploy a PKI	456
Server Side PKI Integration	456
Client Side Devices	456
Choosing a Certificate Authority	456
Certificate Management Framework	457
Certificate Deployment	457
Practical Limits of PKI Technology	457
Using PDAs with PKI Security	458
The Future of Security on the Wireless Web	458
Summary	460
Solutions Fast Track	461
Frequently Asked Questions	464
Webmaster's Guide to the Wireless	
Internet Fast Track	467
Index	489