

# Contents

BODY AREAS 6

SKELETON 8

MUSCLES 10

BRAIN, SPINAL CORD, AND NERVES 12

ENDOCRINE SYSTEM 14

HEART AND BLOOD VESSELS 16

LYMPHATIC SYSTEM 18

RESPIRATORY ORGANS 20

DIGESTIVE ORGANS 22

URINARY AND REPRODUCTIVE SYSTEMS 24

HEAD AND NECK 1 26

HEAD AND NECK 2 28

HEAD AND NECK 3 30

HEAD AND NECK 4 32

TRUNK 1 34

TRUNK 2 36

THORAX 1 38

THORAX 2 40

ABDOMEN 1 42

ABDOMEN 2 44

ABDOMEN 3 46

PELVIC REGION 1 48

PELVIC REGION 2 50

SHOULDER AND UPPER ARM 52

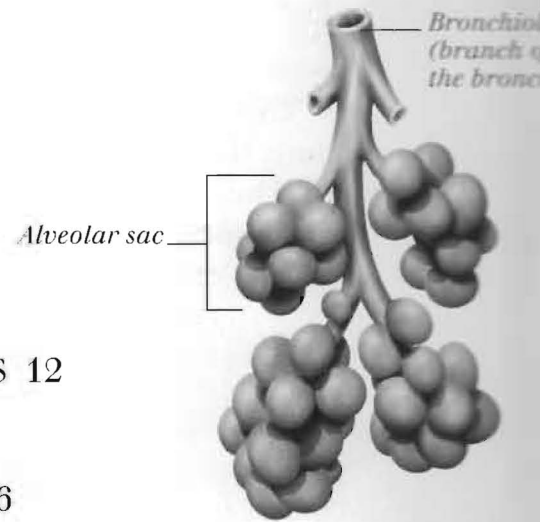
FOREARM AND HAND 54

THIGH 56

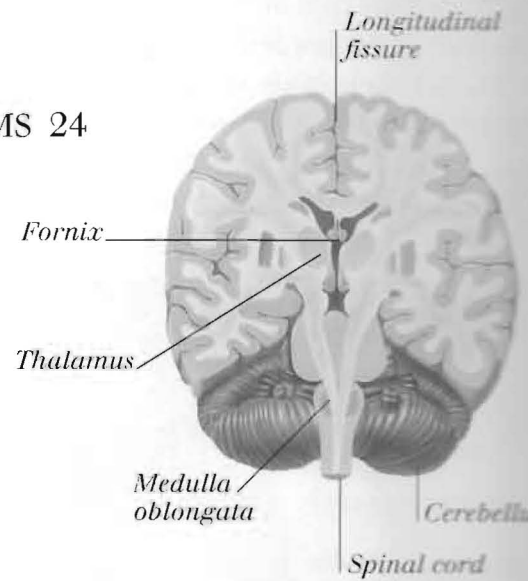
LOWER LEG AND FOOT 58

INDEX 60

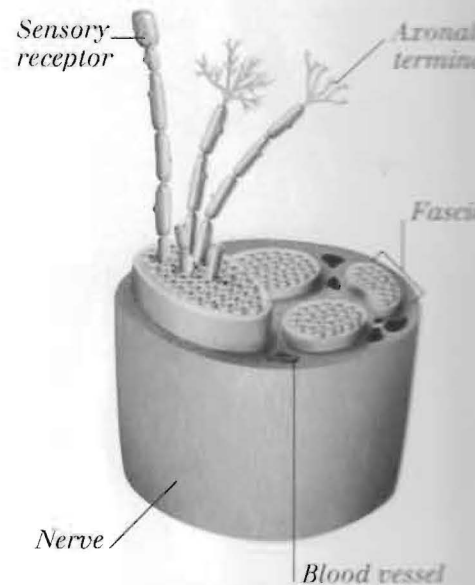
ACKNOWLEDGMENTS 64



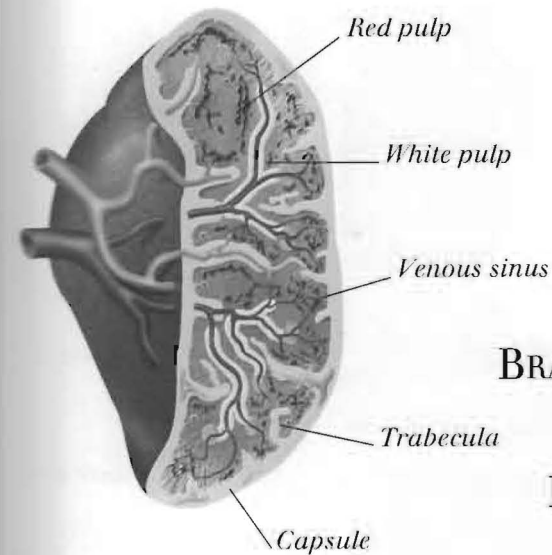
ALVEOLI



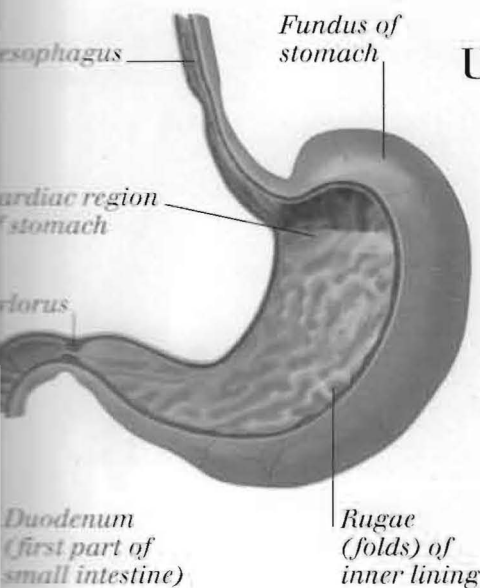
CORONAL SECTION THROUGH BRAIN



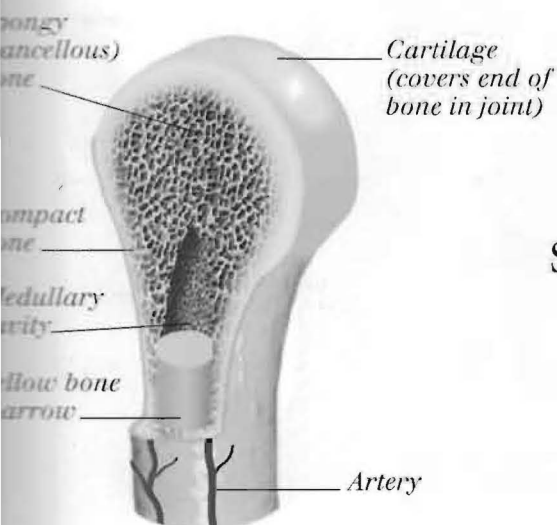
NERVE STRUCTURE



THE SPLEEN



THE STOMACH



BONE STRUCTURE